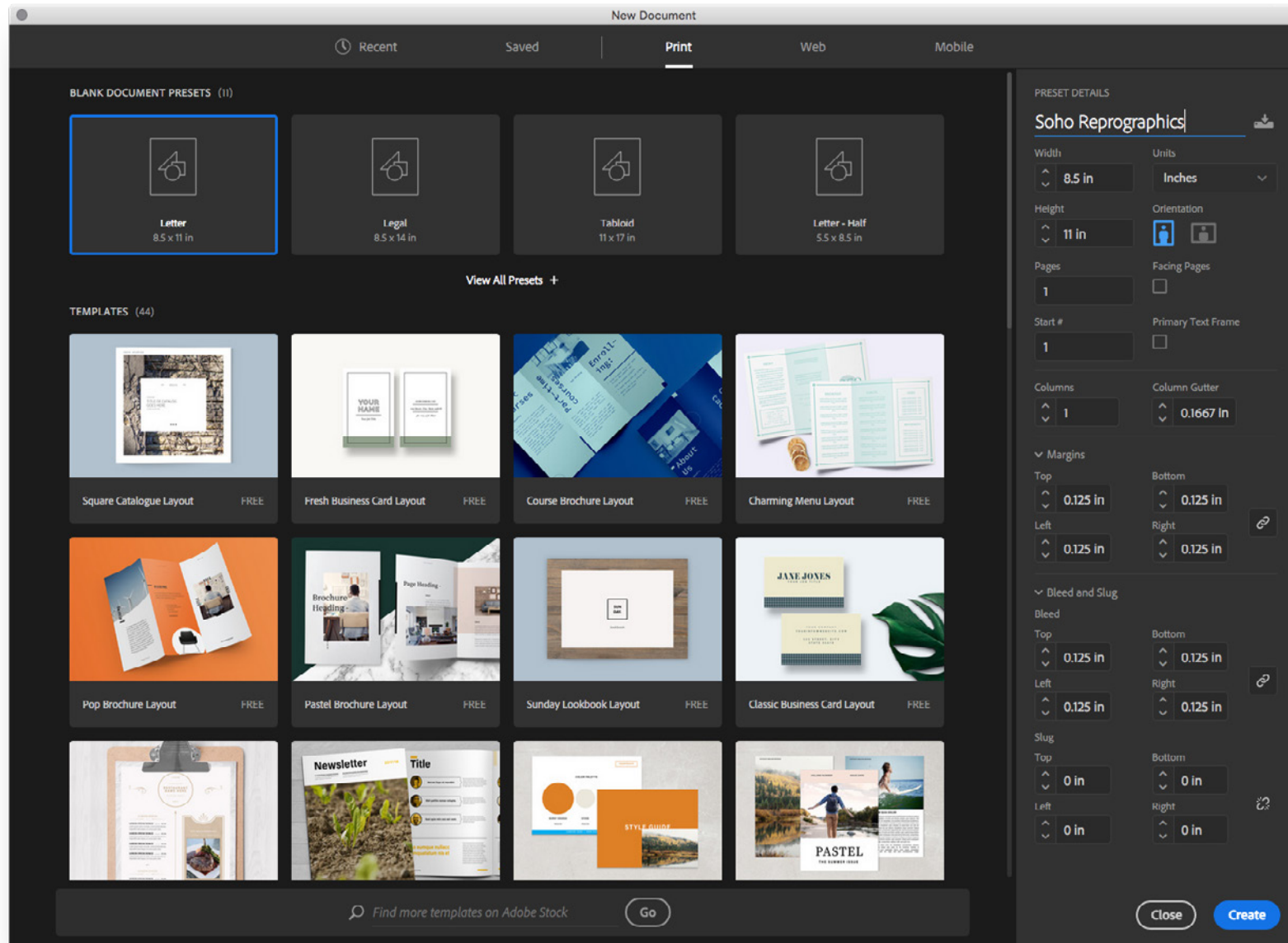


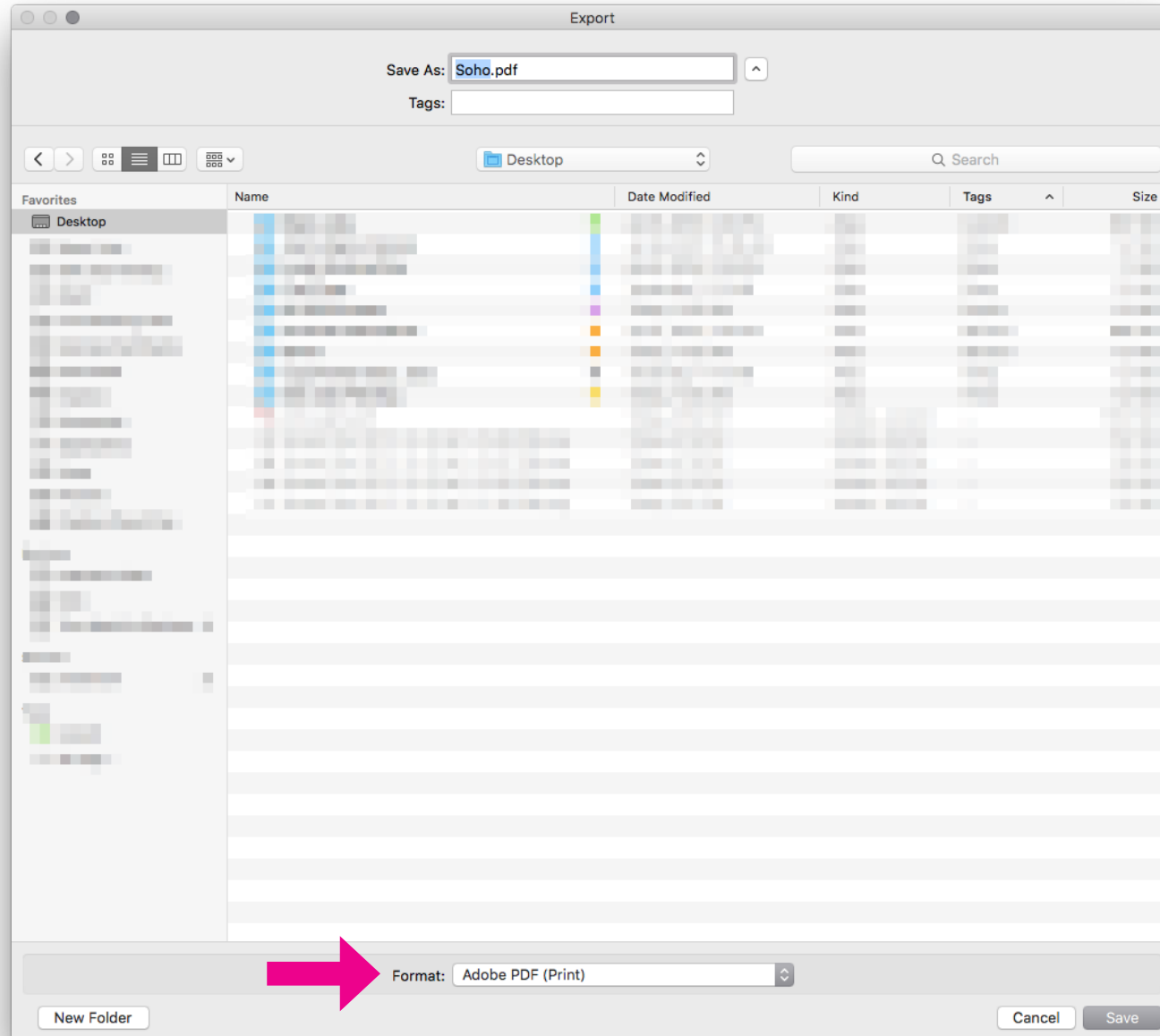
How to set-up bleed in Indesign CC



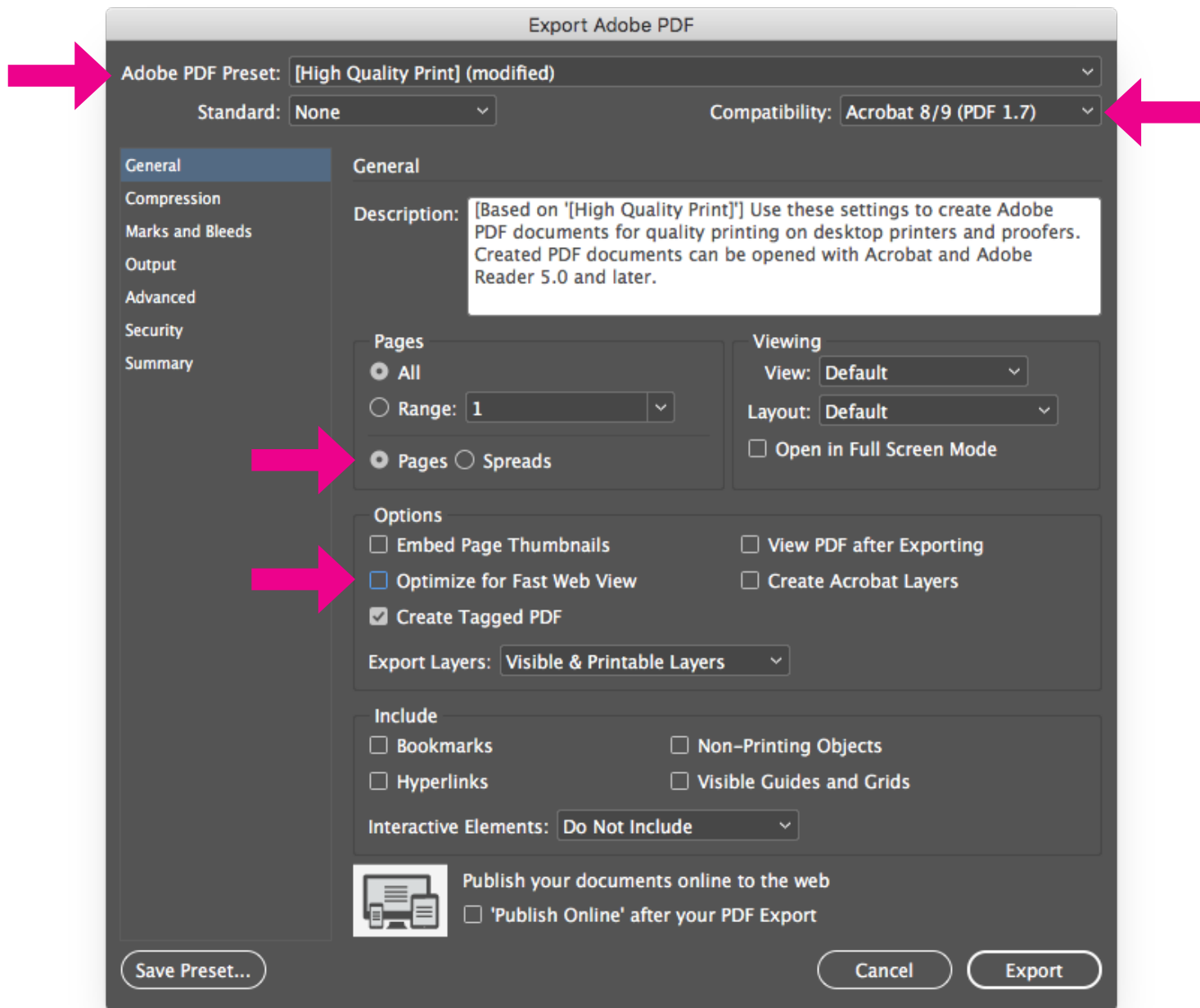
1. Create new document. on a **Mac** (Command + N) or **PC** (Ctrl + N)
2. Select page size or input custom page size.
3. Adjust margins to no less than 0.125"
4. Input bleed amount of 0.125"



1. Drag artwork to the bleed line (red line)

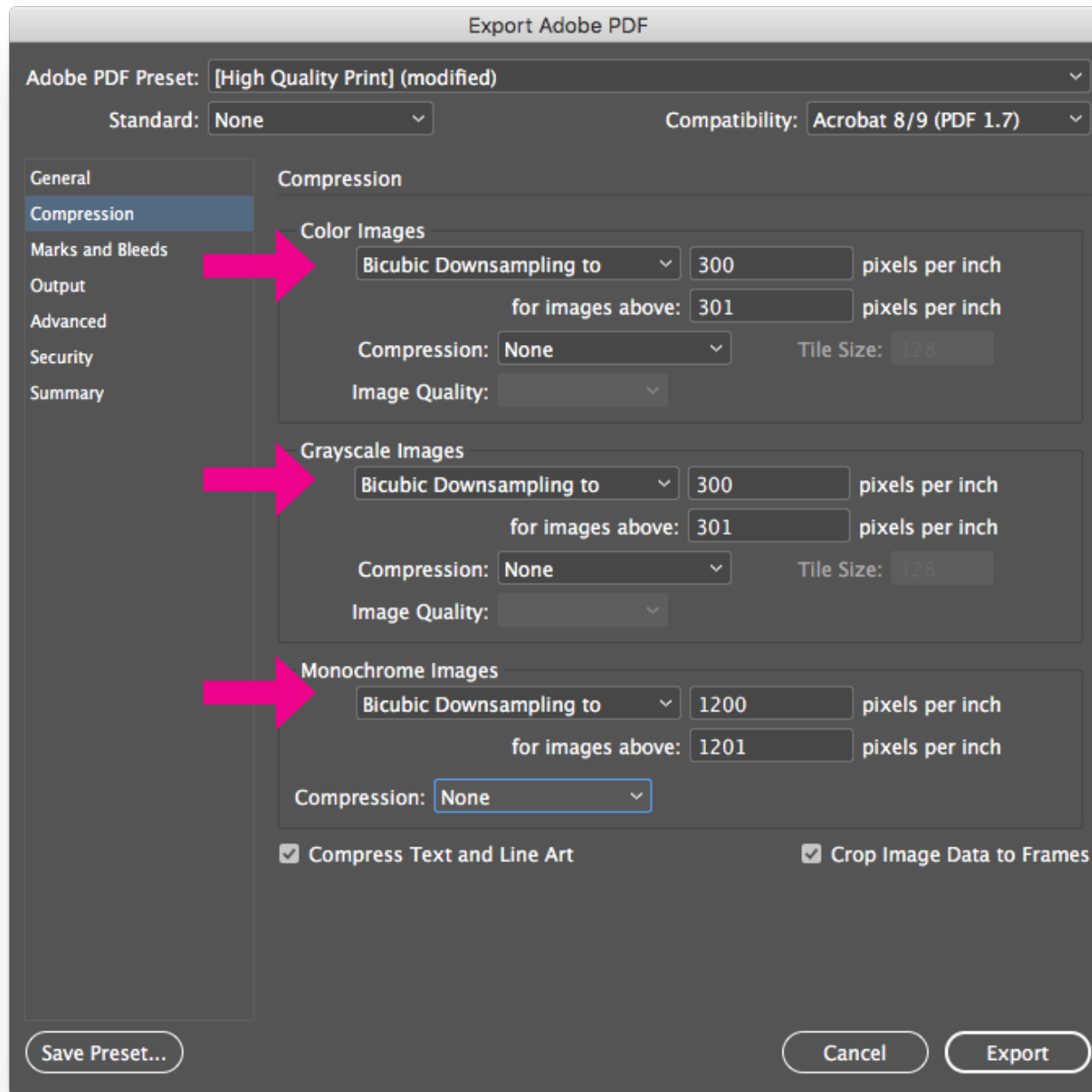


1. Export as a PDF file for Print. On a **Mac** (Command + N) **PC** (Ctrl + N)
2. Choose a location where you would like to save the PDF file.

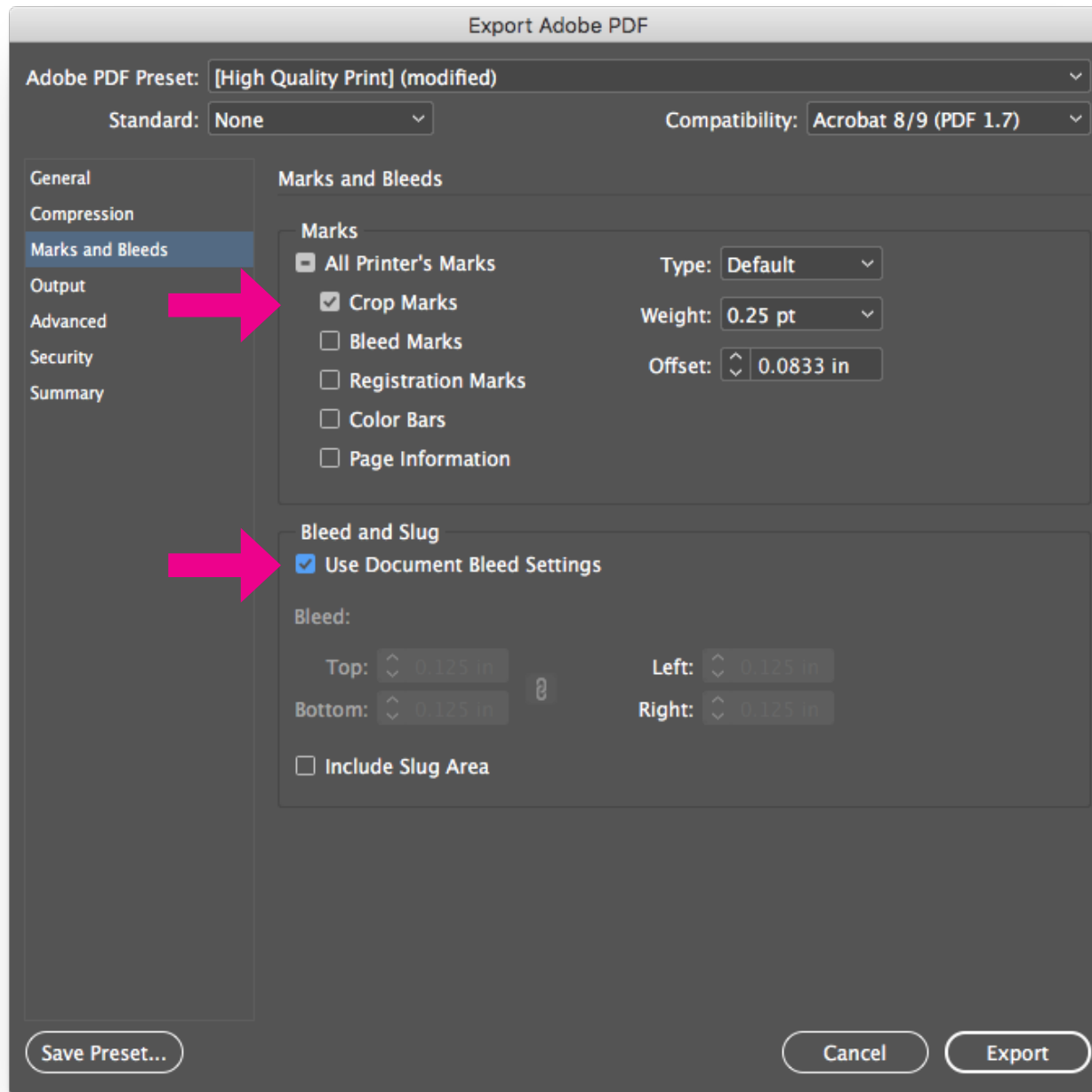


PDF Settings/ General

1. Choose “High Quality Print” from the Adobe PDF preset menu.
2. Change the Compatibility to the newest version (last on the drop down list)
3. Click on “Pages”.
4. Click off “Optimize for Fast Web View”

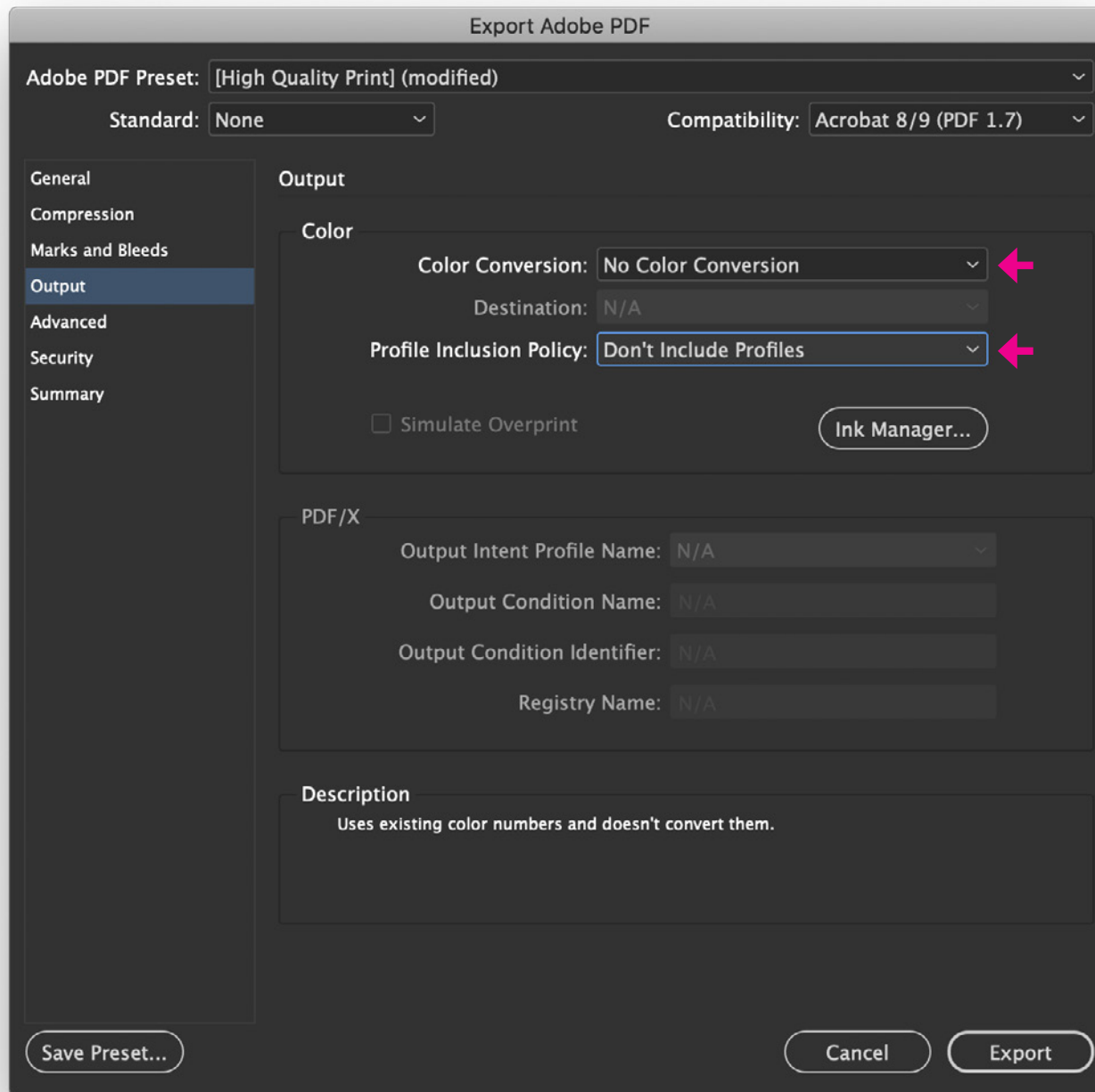


PDF Settings/Compression
See above for items to change.



PDF Settings/Marks and Bleeds

1. Click on "Crop Marks"
2. Click on "Use Document Bleed Settings"



PDF Settings/Output

See above for items to change.

A black square containing the text 'SOHO REPRO GRAPHICS' in a bold, white, sans-serif font. The text is arranged in three lines: 'SOHO' on the top line, 'REPRO' on the middle line, and 'GRAPHICS' on the bottom line. The square has crop marks at the corners, with pink arrows pointing inward from the top-right and bottom-left corners.

SOHO
REPRO
GRAPHICS

Check Your PDF File.

Make Sure the crop marks are visible and go into the artwork.
See above for sample.